



Goldmere Manor

6
Bedrooms

7
Bathrooms

8,350
Living Area

8,718
Lot Area



Goldmere Manor

Goldmere Manor

Set on a coveted 60 ft wide, 8,715 sqft lot in Santa Monica's prized Gillette Regent Square, just north of Montana Avenue, 622 24th Street is a rare Bauhaus gem offering 8,350 sqft of refined living. Designed by world-renowned architect Irving Tobocman--his only residential project in California--this striking contemporary home exemplifies proportion, materiality, and natural light at its finest. A harmonious blend of form and function, the residence features full-slab Italian travertine floors, custom-crafted oak millwork, and floor-to-ceiling glass, reflecting Tobocman's commitment to continuity, spatial harmony and timeless design. The main level opens through a gracious formal foyer into a voluminous living room and a defined dining space, framed by floor-to-ceiling glass windows which blend the indoors with the natural landscape. A sleek chef's kitchen with dual Sub-Zero refrigerators, Gaggenau ovens, and a Wolf range anchors the home, complete with an oversized island, breakfast nook, and walk-in pantry. The adjacent family room is ideal for entertaining, featuring a travertine bar, built-in Sonos system, and sliding walls of glass that open to a lush, newly renovated backyard with a saltwater pool, spa, and baja. A bedroom, two powder rooms, and an attached two-car garage complete the main floor. A dramatic double-height corridor with architectural glass block leads upstairs to four spacious bedrooms all with en-suite baths, oversized walk-in closets, and custom built-ins surrounding a cozy, sunken den. The primary suite is a true retreat with dual baths, a jacuzzi-jet soaking tub, massive walk-in closet, and a 35 ft private terrace overlooking the pool. Descending downstairs, the lower level boasts a sprawling recreation room perfect for entertaining guests, children to play and health and wellness programming. A new custom kitchenette, private office, laundry room, 371 sqft of storage, and a full guest suite with private living room, bedroom, and full bath. Located just minutes from the Brentwood Country Mart, Franklin Elementary, and the boutiques and cafes of Montana Avenue, 622 24th St is an irreplicable one-of-a-kind architectural statement, an art collector's dream, and a true sanctuary for modern family life.



**6
BEDS**



**7
BATHS**



**8,350 SQ.FT.
LIVING
AREA**



**8,718
SQ.FT.
LOT**

FEATURES & AMENITIES

INTERIOR

TOTAL BEDROOMS	6
TOTAL BATHROOMS	7
FULL BATHROOMS	7

EXTERIOR

STORIES	3
PARKING	4

AREA & LOT

STATUS	For Sale
LIVING AREA	8,350 Sq.Ft.
LOT AREA	8,718 Sq.Ft.
TYPE	Residential
YEAR BUILT	1998
NEIGHBORHOOD	Santa Monica
ARCHITECTURE STYLES	Contemporary
VIEW DESCRIPTION	No



Goldmere Manor



Goldmere Manor



Goldmere Manor



Goldmere Manor



Goldmere Manor



Goldmere Manor



Goldmere Manor



Goldmere Manor



Goldmere Manor



Goldmere Manor



Goldmere Manor



Goldmere Manor



Goldmere Manor



Goldmere Manor





Goldmere Manor



Goldmere Manor



Goldmere Manor



Goldmere Manor



Goldmere Manor



Goldmere Manor



Goldmere Manor



Goldmere Manor



Goldmere Manor



Goldmere Manor



Goldmere Manor



Goldmere Manor



Goldmere Manor



Goldmere Manor



Goldmere Manor

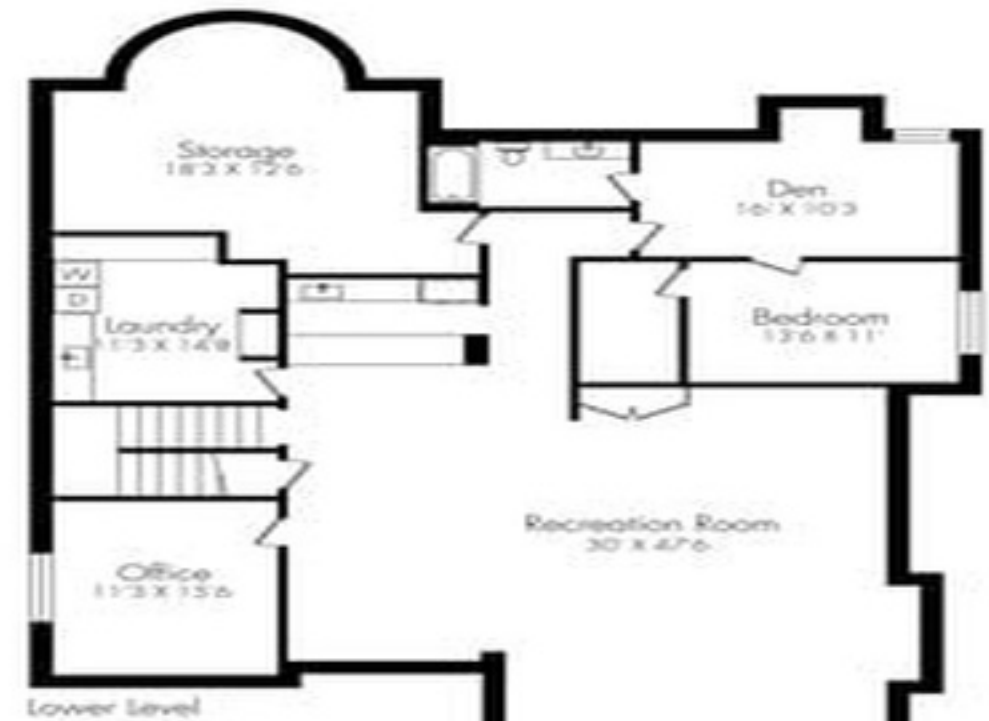


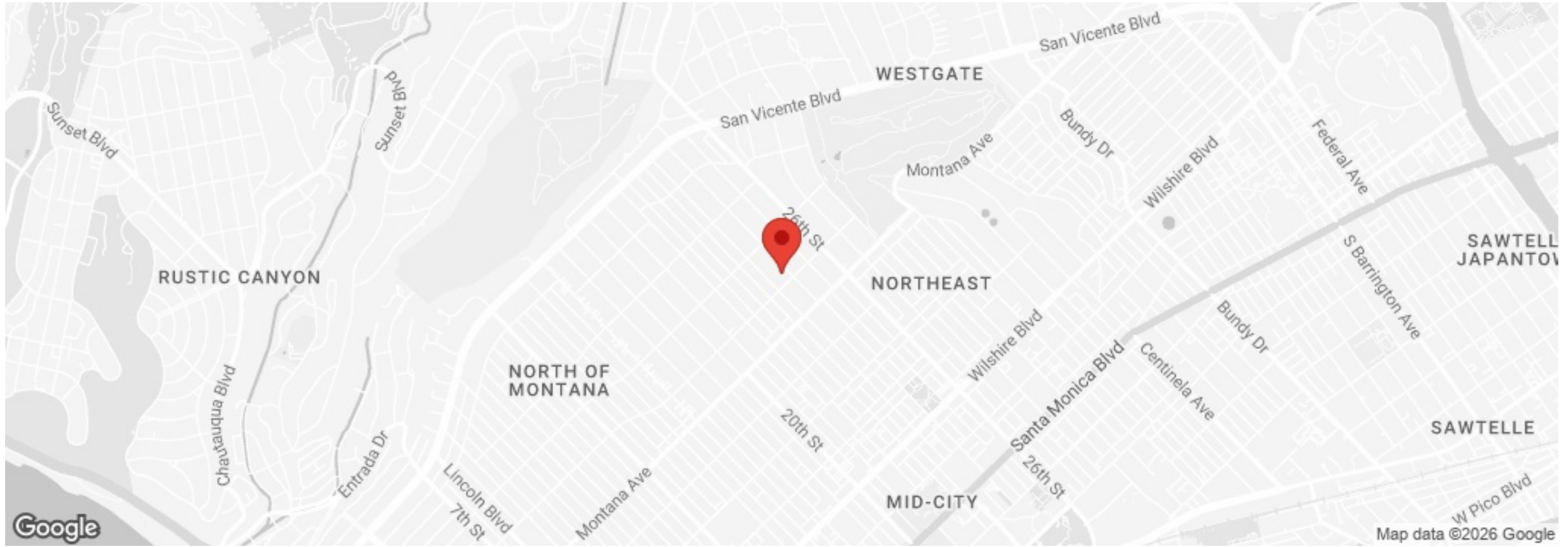
Goldmere Manor



Goldmere Manor

622 24th Street Santa Monica





Goldmere Manor